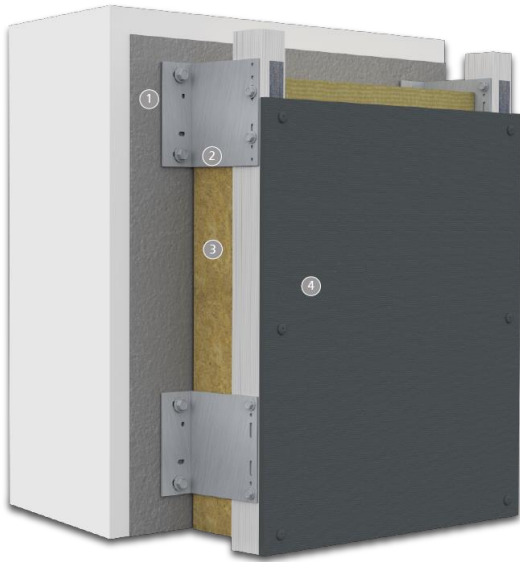


System Bulletin

StoVentec® Fiber Cement

Rainscreen wall system with high-density fiber cement panels, continuous insulation and air and water-resistive barrier



Structural Back-up Wall (by others): Steel or wood frame with glass mat gypsum sheathing in compliance with ASTM C1177 or code compliant OSB or plywood sheathing, concrete or core filled concrete masonry, existing structurally sound, uncoated brick or other masonry wall construction.

| | |
|----|--|
| 1) | Air and Water-Resistive Barrier: Sto AirSeal® (alt. options: Sto Gold Coat, VaporSeal®, GoldSeal STPE, StoShield SA VP, or SA NP) |
| 2) | Sub-construction: StoVentro™ Brackets, Thermal Blocking Elements (not shown), StoVentro™ L and T-Profiles + EPDM Foam Tape |
| 3) | Thermal Insulation: Rockwool Cavityrock® mineral wool |
| 4) | <p>StoVentec® Fiber Cement cladding panels</p> <p>Thicknesses: 8 or 10mm Standard Dimensions:</p> <ul style="list-style-type: none"> 4 feet (1220mm) x 8 feet (2440mm) 4 feet (1220mm) x 10 feet (3050mm) <p>Concealed fixing (10mm panels)</p> <ul style="list-style-type: none"> StoVentro Carrier Profile Hangers with Agraffes Specialty hidden fasteners (TUF-S 6x9) <p>Visible Fixing (8 or 10mm panels)</p> <ul style="list-style-type: none"> Rivets or Screws with centering sleeves |

System Description

StoVentec Fiber Cement is a drained and back-ventilated rainscreen wall system from a single source that combines superior air and weather tightness with excellent thermal performance and fire protection. It incorporates noncombustible continuous exterior insulation and an air and water-resistive barrier with Sto Ventro™ Sub-construction and high-density StoVentec Fiber Cement panels to produce an advanced wall assembly.

Uses

StoVentec Fiber Cement can be used on interior or exterior residential, commercial, and institutional wall construction.

| Features | Benefits |
|--|--|
| Drained and back-ventilated rainscreen wall design | Excellent moisture control |
| Open joints | Rainscreen ventilation and drainage, reduced building maintenance, ease of replacement |
| High-density fiber cement | Durable, temperature stable, can be installed in cold weather, resilient against high wind loads |
| High-density mineral wool insulation | Continuous noncombustible exterior thermal control layer |
| Fully integrated seamless air and water-resistive barrier | Compatible air, water, and vapor control layer from a single source |
| Properties | |
| ASTM C1186 compliant | Type A, Grade IV |
| Panel and insulation combustibility, flame spread | Noncombustible, 0 flame spread, 0 smoke development |
| Insulation RSI value (R-value) | 0.75 m²•K / W per 25mm (4.3 hr•ft²•°F / Btu per in) |
| Finishes | Opaque/solid color surface coated on grey body or integrally colored. Natural appearance with integral color and hydrophobation. |
| Warranty | |
| Ten year limited warranty | |
| Maintenance | |
| Requires periodic cleaning of panels to maintain | |

System Bulletin

Sto Ventec® Fiber Cement

Rainscreen wall system with high-density fiber cement panels, continuous insulation and air and water-resistive barrier

appearance.

Precautions and Limitations

Not for use on horizontal or low slope surfaces, below grade, roofs or roof-like surfaces, or in areas of water immersion, pooling or ponding water. Soffit and ceiling applications are acceptable.

Structural back-up wall must be level to within 6 mm in 3.0 m (~¼ inch in 10 ft).

Pull-out or withdrawal capacity of fasteners into structural wall must be sufficient to resist negative wind loads (with appropriate safety factor as required by applicable building code).

Wind load resistance: structural back-up wall construction must be designed for maximum allowable deflection of L/240, normal to the plane of the wall. Stud spacing: 406 mm – 610 mm (~16-24 inches) on center typical. Refer to [Intertek CCR-0600](#), StoVentec Fiber Cement Design Guide and Detail Booklet, and/or SVFC Install Guide for wind load ratings.

Insulation board thickness: (Standard) 25-152mm (1-6 inches) range in ½" increments. Also available in 7 and 8 inch (178 and 203mm) thicknesses. Cavityrock® Black is available and features black mineral fiber facing for open-joint cladding systems.

Ventilation cavity depth: 20-50 mm (~3/16 - 2 inches).

Fiber cement weight: 15.7 kg/m² if 8mm thick (~3.2 lb/ft² if 5/16"), 19.6 kg/m² if 10mm thick (~4 lb/ft² if 3/8")

Aesthetics: no color restrictions apply. Smooth or sanded with opaque solid color acrylic finish on grey or through-color bodied panels. Natural fiber-cement appearance w/ semi-transparent hydrophobic top-coating, through-body color panels with smooth or sanded texture.

Refer to specific component product bulletins and packaging for other limitations that apply on use, handling and storage of component materials.

Regulatory Compliance and Standards Testing

| | |
|------------------------------|--|
| ASTM C1186 | Fiber cement compliant with Type A, Grade IV requirements. Materials have minimum density of 1600 kg/m³ (~100 lb/ft³). |
| ASTM E84 | Fiber cement panels and mineral wool insulation have 0 flame spread, 0 smoke development index ratings |
| ASTM E330 | System tested for wind load capacity up to -190 lb/ft² (-9.1 kN/m²) without failure. |
| ASTM E331 | System tested for wind-driven water infiltration for 2 hours @ 300 Pa and 15 minutes @ 720 Pa |
| AAMA 509 | Water: W2, Ventilation: V3 |
| ASTM E136/E2652 | Fiber cement panels are noncombustible |
| IECC, ASTM E2178 | Air barrier component complies with 2015, 2018, 2021 IECC Section C402.5 as an air barrier material |
| ASTM C612 | Insulation conforms to applicable standard for board thermal insulation |
| NFPA 220 | Insulation complies with criteria for non-combustibility |
| IBC, IRC, ASTM E 2570 | System AWRB building code compliance: ICC-ESR 1233 |

| | | |
|---|--|---|
| Sto Corp. 3800 Camp Creek Parkway Building 1400, Suite 120 Atlanta, GA 30331 Tel: 404-346-3666 Toll Free: 1-800-221-2397 Fax: 404 346-3119 www.stocorp.com | SB_9000FC Revision: 002 Date: 12/2025 | <p style="text-align: center;">Attention</p> <p>Sto products are intended for use by qualified professional contractors, not consumers, as a component of a larger construction assembly as specified by a qualified design professional, general contractor or builder. They should be installed in accordance with those specifications and Sto's instructions. Sto Corp. disclaims all, and assumes no, liability for on-site inspections, for its products applied improperly, or by unqualified persons or entities, or as part of an improperly designed or constructed building, for the nonperformance of adjacent building components or assemblies, or for other construction activities beyond Sto's control. Improper use of Sto products or use as part of an improperly designed or constructed larger assembly or building may result in serious damage to this product, and to the structure of the building or its components. STO CORP. DISCLAIMS ALL WARRANTIES EXPRESS OR IMPLIED EXCEPT FOR EXPLICIT LIMITED WRITTEN WARRANTIES ISSUED TO AND ACCEPTED BY BUILDING OWNERS IN ACCORDANCE WITH STO'S WARRANTY PROGRAMS WHICH ARE SUBJECT TO CHANGE FROM TIME TO TIME. For the fullest, most current information on proper application, clean-up, mixing and other specifications and warranties, cautions and disclaimers, please refer to the Sto Corp. website, www.stocorp.com</p> |
|---|--|---|



StoVentec Glass

Rainscreen wall system with opaque glass, continuous insulation and continuous air and moisture barrier

| | |
|-----------------------|--|
| IECC | System meets requirements for continuous insulation and ci R-value requirements for above grade walls of 2015 and 2018 IECC Section 402.2, and contributes to U-value for above grade walls when figuring compliance based on U-factor |
| Listing/Certification | Intertek CCRR-0600 |

| | | |
|--|---|--|
| Sto Corp. 3800 Camp Creek Parkway Building 1400, Suite 120 Atlanta, GA 30331 Tel: 404-346-3666 Toll Free: 1-800-221-2397 Fax: 404 346-3119 www.stocorp.com | SB-9000G Revision: 000 Date: 01/2019 | <p style="text-align: center;">Attention</p> <p>Sto products are intended for use by qualified professional contractors, not consumers, as a component of a larger construction assembly as specified by a qualified design professional, general contractor or builder. They should be installed in accordance with those specifications and Sto's instructions. Sto Canada Ltd. disclaims all, and assumes no, liability for on-site inspections, for its products applied improperly, or by unqualified persons or entities, or as part of an improperly designed or constructed building, for the nonperformance of adjacent building components or assemblies, or for other construction activities beyond Sto's control. Improper use of Sto products or use as part of an improperly designed or constructed larger assembly or building may result in serious damage to this product, and to the structure of the building or its components. STO CANADA LTD. DISCLAIMS ALL WARRANTIES EXPRESS OR IMPLIED EXCEPT FOR EXPLICIT LIMITED WRITTEN WARRANTIES ISSUED TO AND ACCEPTED BY BUILDING OWNERS IN ACCORDANCE WITH STO'S WARRANTY PROGRAMS WHICH ARE SUBJECT TO CHANGE FROM TIME TO TIME. For the fullest, most current information on proper application, clean-up, mixing and other specifications and warranties, cautions and disclaimers, please refer to the Sto Canada Ltd. website, www.stocorp.ca.</p> |
|--|---|--|